



Indigo | Energy
Quality Engineers, Quality Solutions

Commercial Support Service

May 2022



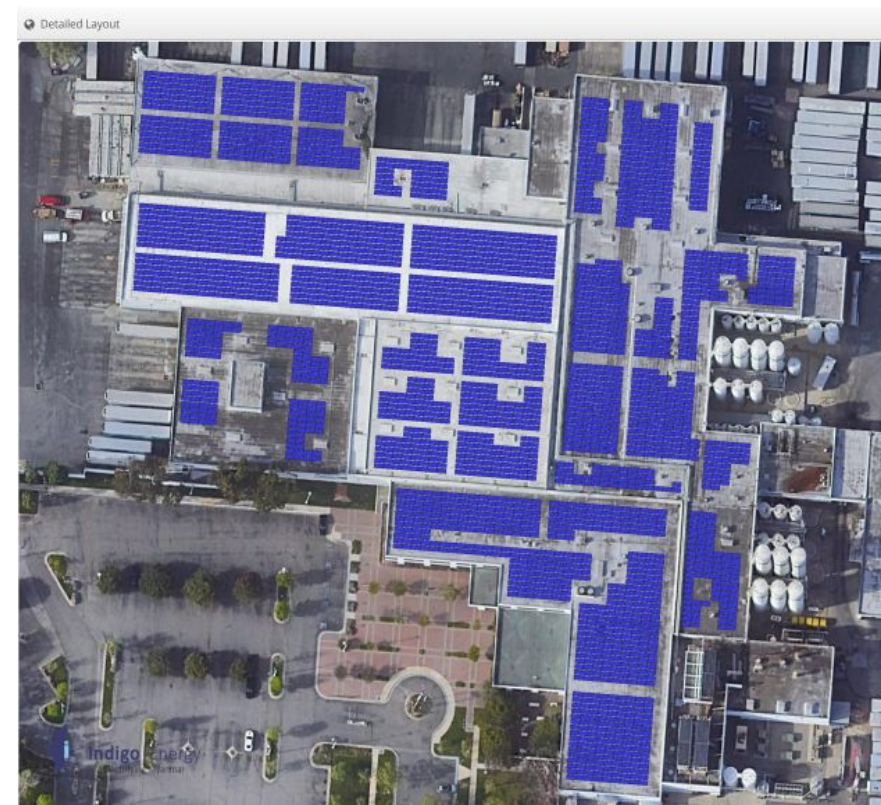


WHY YOU NEED COMMERCIAL SUPPORT

You need commercial support for preliminary designs, calculations, and analysis to close more deals with your prospects.

| ⚡ Annual Production | | | |
|----------------------------------|-------------------------------------|--------------------|--------------|
| | Description | Output | % Delta |
| Irradiance (kWh/m ²) | Annual Global Horizontal Irradiance | 1,960.9 | |
| | POA Irradiance | 2,108.2 | 7.5% |
| | Shaded Irradiance | 2,073.3 | -1.7% |
| | Irradiance after Reflection | 2,011.9 | -3.0% |
| | Irradiance after Soiling | 1,971.7 | -2.0% |
| | Total Collector Irradiance | 1,971.7 | 0.0% |
| Energy (kWh) | Nameplate | 2,755,311.0 | |
| | Output at Irradiance Levels | 2,746,119.1 | -0.3% |
| | Output at Cell Temperature Derate | 2,583,445.0 | -5.9% |
| | Output After Mismatch | 2,484,377.0 | -3.8% |
| | Optimal DC Output | 2,469,394.6 | -0.6% |
| | Constrained DC Output | 2,382,569.0 | -3.5% |
| | Inverter Output | 2,333,182.2 | -2.1% |
| | Energy to Grid | 2,268,720.6 | -2.8% |
| Temperature Metrics | | | |
| | Avg. Operating Ambient Temp | | 21.3 °C |
| | Avg. Operating Cell Temp | | 33.2 °C |
| Simulation Metrics | | | |
| | Operating Hours | | 4362 |
| | Solved Hours | | 4362 |

Annual production of a solar project



Detailed layout of a solar project

INDIGO ENERGY PROVIDES COMMERCIAL SUPPORT FOR DIFFERENT TYPES OF SOLAR PROJECTS

Indigo Energy offers various commercial support services such as solar panel layout design, and load profile calculation for

- Residential and Commercial rooftop solar projects
- Utility-scale solar projects



Residential Rooftop Solar



Commercial Rooftop Solar



INDIGO ENERGY'S COMMERCIAL SUPPORT COVERS

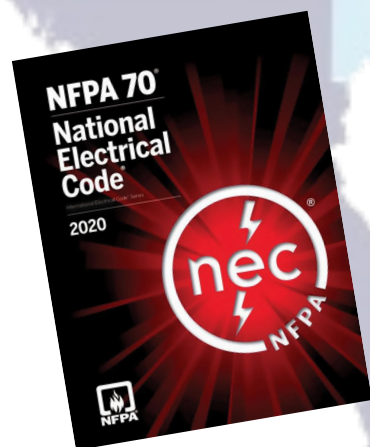
- Design of basic solar module layouts per relevant codes, including the 2018 International Building Code (IBC) and 2018 International Fire Code (IFC)
- Design of system interconnection per relevant codes, including 2020 National Electric Code (NEC) and 2018 International Electrotechnical Commission (IEC)
- Solar capacity (kWp) calculation based on the existing consumption and new machines installed
- Basic energy yield assessment (Helioscope, PVsyst, etc.)
- Basic Bill of Materials (BOM); which includes
 - AC and PV cable sizing
 - Conduit schedules
- Calculation of solar energy contribution to the current energy usage.

The scope of work is flexible according to your needs.



DESIGN FLEXIBILITY TO DEAL WITH DIFFERENT AHJs

Indigo Energy's designs are in compliance with:



[NEC 2020](#)



[2018 IFC](#)



[2018 IBC](#)



[2018 IEC](#)



WHY SHOULD YOU RELY ON US?

01

Quick turnaround time

We provide highly accurate and objective calculations overnight if we are provided with the required information and we are coordinated around the scope and process.

03

On-demand bandwidth

We are available on-demand for overflow engineering needs according to your workload.

02

Cost-effectiveness

We guarantee to offer you high-quality service at a competitive cost relative to your existing solution.

04

Real engineering experience

Our technical team has real, hands-on experience in the solar industry - installation of C&I rooftop solar and mini-grid projects, O&M, and troubleshooting.



FOR MORE INFORMATION, PLEASE CONTACT



Allen Himes
Managing Director
allen@indigoenergy.net
+95 94 0159 6402



Zin Mie Mie Htun
Business Development Manager
zin@indigoenergy.net
+95 99 6989 5817



Zaw Ye Naing
Sales & Marketing Engineer
zaw@indigoenergy.net
+95 97 8872 9072